

# POLLINATOR SCAVENGER HUNT

Find 10 or more to earn a Butterfly Badge!\*



Did you know butterflies prefer red, yellow, orange, pink, and purple flowers with flat tops that grow in clusters?



## FLOWERS

Did you know that New York State is home to more than 400 types of native bees?



## BEES

Trees are a great food source and they provide important habitat for pollinators.

## TREES



Puddles, bird baths, bee sippers, or even a drop of dew can provide clean water for pollinators to drink.



## WATER SOURCE

Many caterpillars use camouflage to hide from predators. The Giant Swallowtail caterpillar disguises



itself as bird poop!

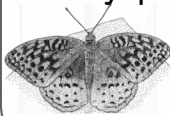
## CATERPILLER

Bees & butterflies aren't alone; many animals help pollinate the plants around us. Can you find any?



## OTHER POLLINATORS

Butterflies come in many different shapes and sizes. How many butterfly species can you find at Stony Kill Farm?



## BUTTERFLIES

Most pollinators visit flowers to collect nectar for food. Bees are unique because they eat nectar AND pollen.



## POLLEN

Many native bees find shelter and lay eggs in the hollow stalks of tall grass.



## TALL GRASS

Monarch Butterflies lay their eggs on milkweed. When they hatch, the caterpillars eat the leaves until it is time to make a chrysalis.



## MILKWEED

Bees pollinate 1/3 of all the food we eat. Do you see any fruits or vegetables growing on the farm?



## FRUITS & VEGGIES

70% of native bees nest in the ground. Bees often find a home in patches of bare dirt.



## BARE DIRT

\*Turn in your scavenger hunt at a Butterflies & Blooms event or at the Stony Kill Farmhouse (M-F 8am-4pm) or Barn (Sa-Su 11am-1pm)

# Butterflies & Blooms

## at Stony Kill Farm

79 Farmstead Ln, Wappingers Falls

1 mile north of Dutchess Stadium off 9D

# August 12-19



**A Week of Art, Music, Workshops, and  
Family Fun, Celebrating our Local Pollinators**

**Sat, Aug 12 | 7:30p** - Outdoor Movie: My Garden of 1000 Bees

**Sun, Aug 13 | 10am** - Peek Into a Honey Beehive

**11am** - Butterfly ID & Pollinator Plant Walk

**8pm** - After-Dark Moth Walk

**Mon, Aug 14 | 11am** - Mindful Movement Yoga for Seniors

**4pm** - Monarch Migration Activity

**Tue, Aug 15 | 9am** - Wild Birds of the Farm Bird Walk

**Wed, Aug 16 | 10:30am** - Storytime & Garden Discovery

**Thu, Aug 17 | 10:30am** - Storytime & Garden Discovery

**11:30am** - Honey Bees Game & Craft Activity

**Fri Aug 18 | 6:30pm** - Make your Own Butterfly Garden

**Sat, Aug 19 | 10am** - Volunteer Project on the Woodland Trail

---

**SAT AUG 19 | 4 - 7:30pm | FESTIVAL FINALE!**

**Hay Rides, Food Trucks, Activities, and Concert on the Lawn**

**Info & Sign-ups at: [Stonykill.org/Butterfly](https://Stonykill.org/Butterfly)**



**Presented by Stony Kill Foundation**